



J D C CIVILS LIMITED

# JDC Civils Ltd.



**Introduction  
2024**

# Introduction to JDC Civils



**J D C CIVILS LIMITED**



## INTRODUCTION

This brochure has been produced for existing and prospective clients to demonstrate who JDC are, what we do and we stand for.

Each section is designed to give an overview of how we approach each project and how we generally operate as a business.

We feel this insight demonstrates how serious we take our job but also how much enjoy being a part of interesting and challenging projects.

If the information provided doesn't answer your queries about the business please let us know.

## ABOUT US

Established in 2021, JDC Civils stands as a dynamic force in the groundworks and civil engineering realm, drawing upon over eight years of industry expertise. Our journey unfolds with remarkable collaborations alongside industry titans, contributing to projects that scale up to an impressive £25 million.

At JDC, we make an unwavering commitment to exceed customer expectations and adhere to the highest compliance standards. Our mission extends beyond project completion; we strive to implement the highest quality standards, ensuring our clients experience thorough satisfaction.

What distinguishes us is our devoted in-house workforce – a team comprising skilled and qualified professionals, each equipped with CSCS and/or CPCS certifications, emblematic of our dedication to excellence.

Nestled in the Midlands, JDC specialises in groundworks, deep drainage, and excavations. Our strategically central location facilitates seamless national coverage, extending our reach to pivotal areas such as Birmingham, Leicester, Coventry, Worcester, Evesham, Redditch, Oxford, and Cambridge.

*Embark on a journey with us where passion, reliability, and excellence redefine the standards of the civil engineering landscape.*





J D C CIVILS LIMITED



## What we do



GROUNDWORKS



EARTHWORKS



DRAINAGE



EXCAVATION

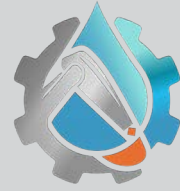


SECTION 278 WORKS



CONCRETE WORKS





J D C CIVILS LIMITED



## Our Ethos

### COMMERCIAL EXCELLENCE

JDC stands out in the commercial realm by offering upfront BQ production, priced BQ services, value engineering, and program support.

We're committed to exploring carbon benefits through initiatives like 'eco' concrete, HVO fuel, carbon asphalt, and the use of hybrid machines where possible.

### WHAT MAKES US UNIQUE

Passion drives us in all things civils. We're involved in various industry aspects, from earthworks to groundworks, 278 works, and in situ concrete projects.

Our diverse team holds accreditations for road works alongside CSCS/CPCS and industry-standard qualifications. Even if you only need groundworks, we're here for you.

Currently investing in lime/cement stabilisation plant and machinery, our engineer is developing test plans and designs to elevate the design process.

A GREAT BUSINESS  
COMES FROM  
A GREAT IDEA





J D C CIVILS LIMITED

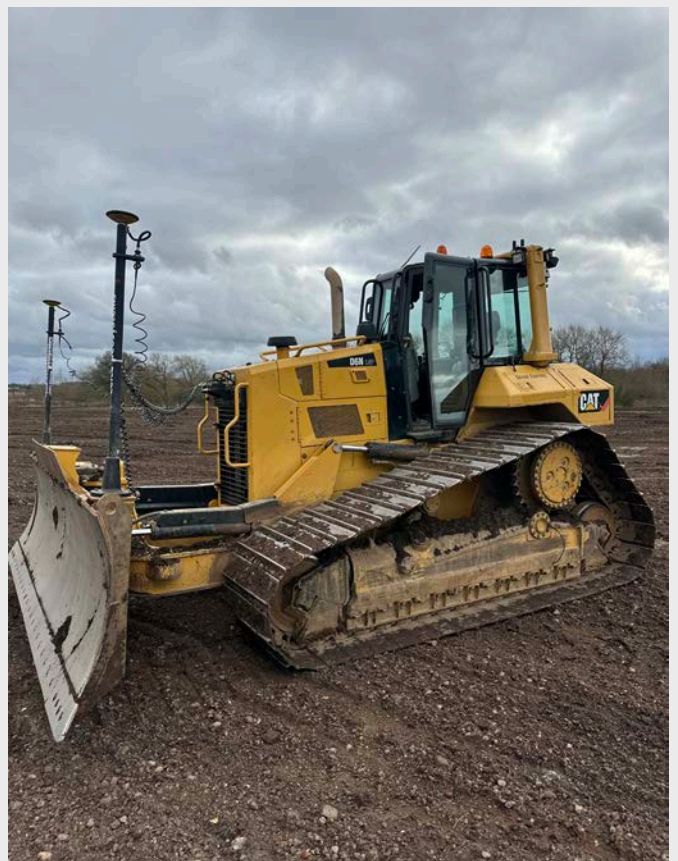
## Our Ethos

### PLANT AND MACHINERY

Our dedication to investment, technology, and adapting to industry needs fuels our success.

Plant ownership and self-reliance, especially with cutting-edge GPS technology for machines and dozers, have propelled JDC's growth.

From standard machines to impressive 36t excavators, a D6 Dozer, and a variety of dumpers, our plant fitter and mechanic ensure everything meets top standards.





J D C CIVILS LIMITED



## JDC Team

**At JDC, we're not just a company;  
we're a dynamic team committed to excellence.**

Our internal IOSH (H&S) staff, coupled with external H&S support, forms the backbone of our safety measures. Behind the scenes, our dedicated office and admin team, including a buyer and plant fleet mechanic, ensure smooth operations.

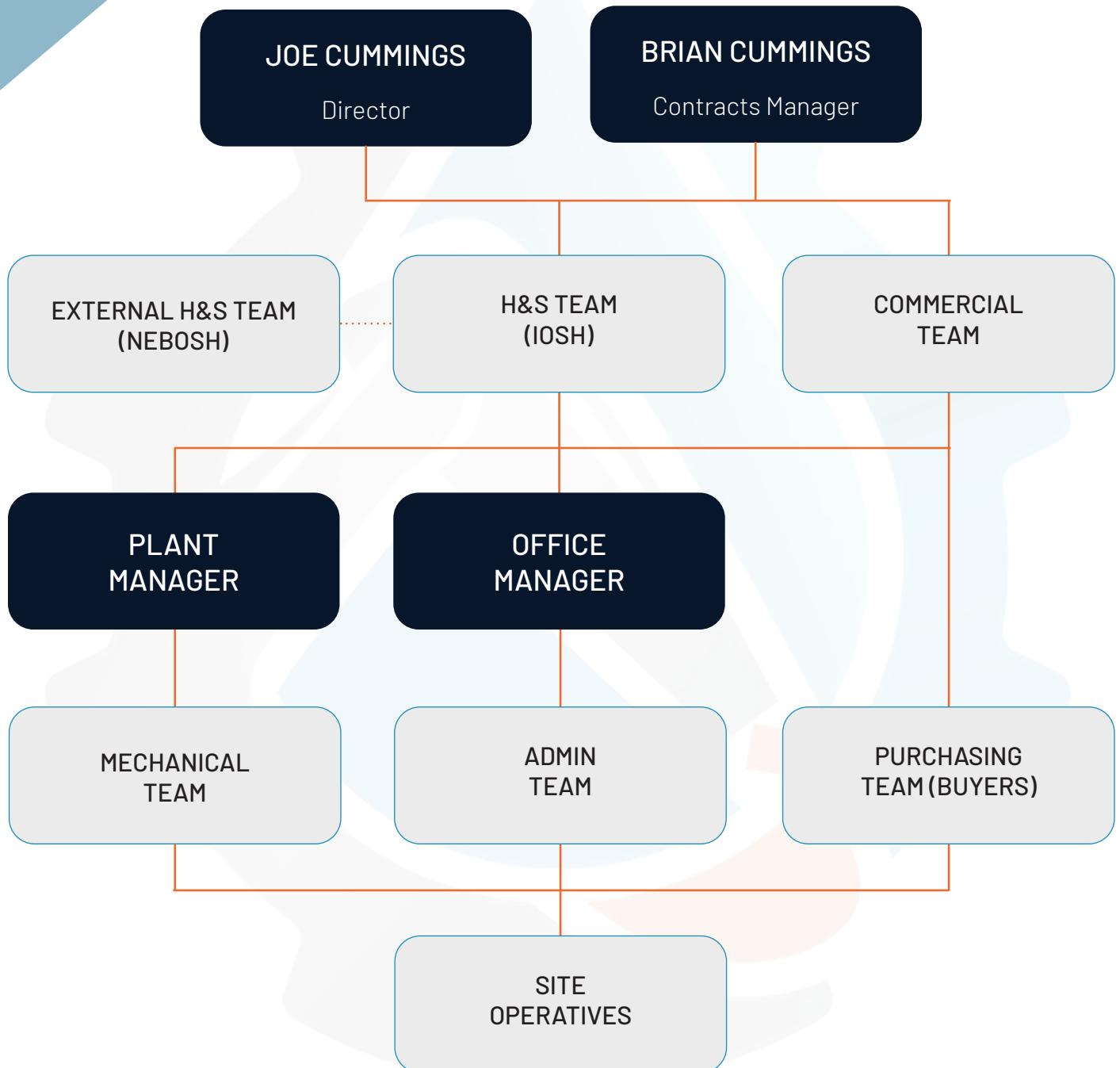
Our estimating and engineering team goes above and beyond, consistently assisting clients with value engineering, upfront BQ productions, and cost-saving initiatives.

The heartbeat of our team is customer care, and we thrive on building strong relationships.

# JDC Team Structure



J D C CIVILS LIMITED





# Meet the Team



J D C CIVILS LIMITED



**JOSEPH CUMMINGS**  
Director

Tel: 07429 478570  
Email: [joe@jdccivils.co.uk](mailto:joe@jdccivils.co.uk)

## INTRO TO JOE...

Over the past few years, Joe has poured boundless energy into enhancing both the work and reputation of JDC.

Armed with a rich farming background and extensive experience subcontracting with major groundworkers in the Midlands, he has swiftly emerged as a driving force within the company.

Joe's journey at JDC is characterised by his persistent problem-solving and an unwavering dedication to customer care and quality.

His outstanding expertise in groundworks, combined with a sharp focus on upholding the highest standards, has become the bedrock of our success.

With Joe at the helm, JDC isn't merely growing—it's flourishing, establishing new standards in excellence and customer satisfaction.

## PROJECT EXPERIENCE



RHODAR CONSTRUCTION  
BICESTER AND YORK

£750K



ARNOLD CLARKE  
DONCASTER

£1.5M



RWE  
SHREWSBURY

£1.3M



# Meet the Team



J D C CIVILS LIMITED

## INTRO TO BRIAN...

Brian, a maestro in civil engineering, brings a wealth of diverse expertise to the table. His standout skill lies in addressing complex drainage issues, establishing a well-deserved reputation as a skilled problem-solver.

What truly distinguishes Brian is not only his proficiency in intricate solutions but also his unwavering work ethic.

Beyond his technical capabilities, Brian is passionately committed to sharing knowledge and expertise with his team. His dedication extends to fostering a collaborative environment that encourages shared learning, empowering every team member to thrive and grow.

Brian's unique blend of expertise and unwavering commitment significantly contributes to the culture of innovation and collective success at JDC Civils.

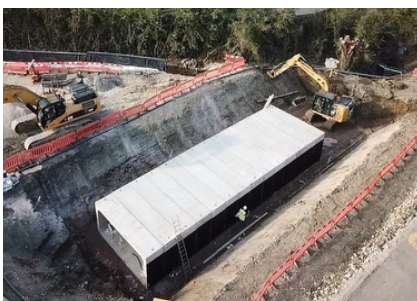


*At JDC, we pride ourselves on our commitment to embracing innovative ideas and technologies to enhance our supply chain policies.*

*We are dedicated to staying ahead of the curve and welcome the opportunity to collaborate with potential clients who share our vision for efficiency & sustainability*



## PROJECT EXPERIENCE



BALFOUR BEATTY  
BICESTER

£350K



HANTALL DEVELOPMENTS  
TAMWORTH

£500K



ARNOLD CLARKE  
DONCASTER

£1.5M

# Our Projects



J D C CIVILS LIMITED



## ARNOLD CLARKE JOHNSON DUNCAN

Doncaster

VALUE £1.5M

JDC Civils spearheaded a significant venture comprising the construction of meticulously planned external works for a new state-of-the-art showroom. Our involvement spanned a spectrum of crucial tasks essential for the project's success, from the initial earthworks to the final touches of asphalt finishes, our team ensured every aspect was meticulously executed to perfection.

### Earthworks and Foundation:

The project commenced with thorough earthworks, meticulously shaping the landscape to accommodate the upcoming structure and external amenities. Our team meticulously prepared the sub-base, laying the groundwork for stable foundations. With precision and expertise, we established sturdy foundations that would support the structure for years to come.

### Drainage and Environmental Considerations:

Recognising the importance of sustainable infrastructure, we integrated sophisticated drainage systems to manage water

effectively. Installation of tanks and silt traps ensured efficient water management and environmental compliance, mitigating potential risks and enhancing the site's resilience.

### External Works Package:

Elevating the aesthetics and functionality of the surrounding environment, our comprehensive external works package encompassed various elements. Impeccably crafted paving solutions not only enhanced accessibility but also added a touch of elegance to the surroundings. Carefully designed kerbs provided structural integrity while seamlessly blending with the architectural aesthetics.

### Concrete and Asphalt Finishes:

Attention to detail was paramount as we applied concrete and asphalt finishes to various surfaces. Our skilled craftsmen meticulously executed each phase, ensuring durability, functionality, and visual appeal. The showroom's concrete slab, finished to an FM2 standard, stands as a testament to our commitment to excellence in every aspect of the project.

# Our Projects



J D C CIVILS LIMITED



## RWE AND LEMP

### INFRASTRUCTURE CIVILS

## West Midlands and Gloucestershire

VALUE £500K - £2M

JDC led a pioneering effort in renewable energy infrastructure with recent projects in the Midlands and Gloucestershire. Collaborating with major European companies, we established cutting-edge solar farms, marking a significant advancement in sustainable energy solutions.

The project encompassed a wide range of infrastructure works, from earthworks including cut, fill, and ground modification to precise installation of sub base and capping. JDC ensured every aspect of the solar farm's foundation was optimised for durability and efficiency. Additionally, we constructed reinforced concrete structures supporting critical components such as substations, electric vehicle charger points, and water and electric bases, tailored to diverse operational needs.

Demonstrating expertise in utility infrastructure, JDC installed thousands of metres of service trenches and ducting, seamlessly integrating essential utilities crucial for the solar farm's

operations. From electricity to water supply, every utility requirement was meticulously met to guarantee uninterrupted functionality.

The project also featured the creation of several bellmouth entrances, meticulously crafted with tarmacadam as part of the 278 works packages. These entrances not only facilitated access but also improved overall functionality and enhanced the farm's aesthetics.







J D C CIVILS LIMITED

# Accreditations

We take continuous development seriously, holding constructionline gold, silver, and the SSIP supply chain accreditation. Never content, we continually review and pursue accreditations that benefit our business, clients, and the industry.





**J D C CIVILS LIMITED**

## **Contact Us**

### **GENERAL ENQUIRIES**

**T:** 01675 471111

**E:** [office@jdccivils.co.uk](mailto:office@jdccivils.co.uk)

**W:** [www.jdccivils.co.uk](http://www.jdccivils.co.uk)

### **TENDER / PROJECT SUPPORT ENQUIRIES**

**E:** [commercial@jdccivils.co.uk](mailto:commercial@jdccivils.co.uk)